



**With fully integrated laser**

Upgrade compatible with existing Stellaris PC.

**Wireless footpedal with integrated laser controls**

A single pedal controls all your procedural needs.

**Even more intuitive**

Re-designed interface with enhanced clarity and ease of use.



**With enhanced procedural versatility**

A range of multi-function laser probes including curved, illuminated and aspirating.

Stellaris<sup>®</sup> PC: Next Generation  
Fully integrated  
Procedural versatility  
Even more intuitive

[choosestellaris.com](http://choosestellaris.com)

**BAUSCH + LOMB**  
See better. Live better.



Stellaris<sup>®</sup> PC: Next Generation  
Fully integrated  
Procedural versatility  
Even more intuitive

[choosestellaris.com](http://choosestellaris.com)

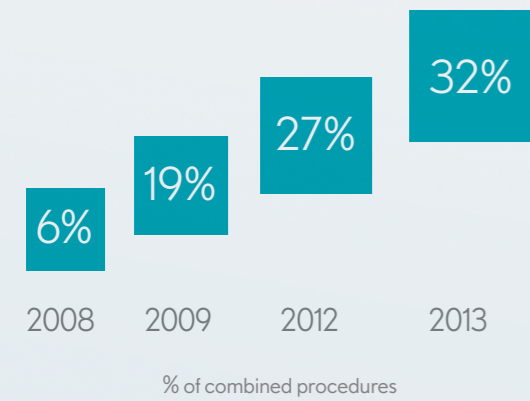
**BAUSCH + LOMB**  
See better. Live better.

# Stellaris® PC: Fully Integrated Complete combined surgical system

## Combined surgical system

- One machine for posterior, anterior, and combined procedures
- Small Footprint (easy-to-use, compact, mobile unit with a comprehensive suite of surgical packs and instruments)

Stellaris PC is designed to meet the growing demand for combined procedures



Source: Millward Brown VR Market Study 2013

**Why I choose Stellaris® PC:**  
 “Stellaris PC combines the latest advances in 25g vitrectomy with a high performance anterior system - using these combined phaco-vitrectomy capabilities has reduced our average surgery time by 30%”

Pere Romero-Aroca MD PhD  
 Ophthalmology Department  
 Hospital Universitari Sant Joan de Reus

## Integrated 532nm Laser

- Fully upgradeable laser module for existing Stellaris PC
- Industry standard 532nm laser and SMA905 connector
- Integrated connectors within sterile field
- Extended range of power, interval and duration settings
- Easy to use - no warm-up time

## Integrated single foot pedal

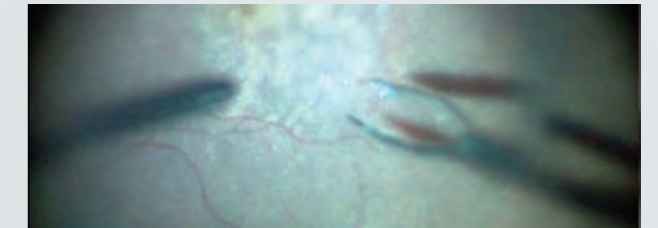
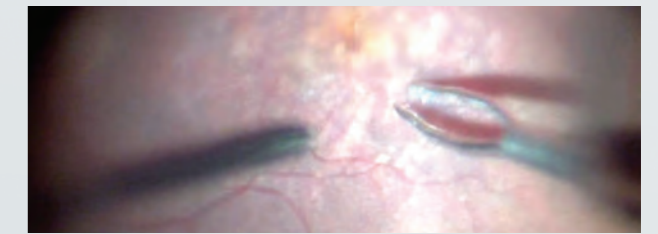
- Improved comfort
  - Reduced pitch improves surgeon comfort
  - Includes a soft, graduated heel pad
- Enhanced control
  - Four fully-programmable buttons
  - Redesigned buttons ensure a more consistent response
- Includes integrated laser firing control and power setting
- Safety cover for laser firing button
- Wireless, Dual Linear footpedal
  - Wireless pedal for optimum OR-versatility
  - Dual linear provides option for control of two parameters through a single pedal

\*Optional standalone LIO pedal also available



## Advanced Illumination

- Three filters provide greater safety, enhanced visualisation and improved tissue contrast
- Enhanced design wide angle light probe
- Twin Xenon light sources for versatile illumination
- Illumination available for both posterior and anterior phases



**Why I choose Stellaris® PC:**  
 “For peripheral work, I often choose the amber filter. It offers improved safety for longer procedures even with the light output increased to 80-100%”

Paul Bernhard Henrich  
 Ophthalmology Department  
 University of Basel, Switzerland

## Stellaris® PC: Versatility With enhanced procedural versatility

Stellaris PC is complimented by multi-function laser probes to meet a wide range of your procedural needs.

Comprehensive range of colour-coded laser probes expanding your surgical options

- Standard (straight and curved for all gauges)
- Dual function illuminated (for all gauges)
- Aspirating probe in hard or soft tip for extrusion of retinal fluid (in 20g and 23g)
- All laser fibres are flush to probe tip reducing shadows and providing enhanced security
- All provided with industry standard connector SMA905

Versatile posterior system and accessories to meet demands of VR surgery

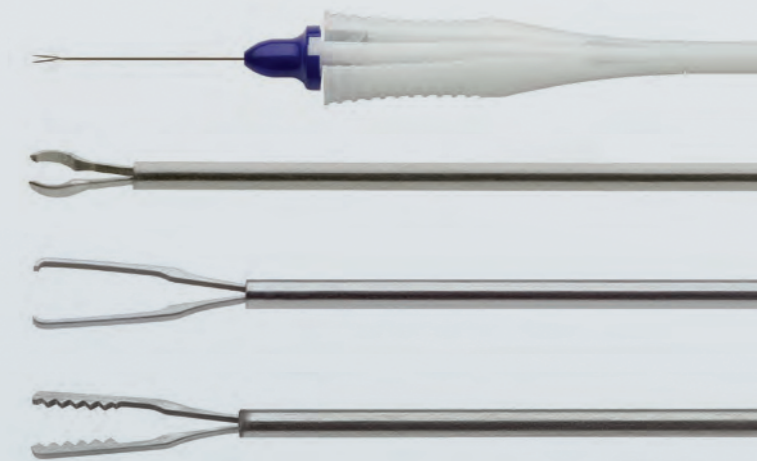
- Extensive range of single-use and reusable VR instruments
- Advanced and efficient 5000cpm for both posterior and anterior vitrectomy

High performance anterior phaco optimised for EasyMICS

- Best Phaco solution (Stellaris proven efficiency)
  - Vacuum-based Stable Chamber fluidics for control and stability
  - Attune™ Energy Management System
- EasyMICS – less invasive surgery for more rapid visual recovery
- Ideal partner for Victus femto system

Designed for safety, consistency, convenience.

- The Bausch + Lomb Storz® Ophthalmics Instrument line of precision-engineered, high quality single use instruments are designed to reduce the risk of infection and cross-contamination, eliminating time and cost associated with reprocessing reusable instruments
- The VR instrument line includes a variety of endgripping, ILM, serrated and asymmetric forceps, designed for excellent visualisation and grasp of retinal membranes with a sleek, ergonomic handle
- The forceps can be used for ILM, epiretinal membrane peel, macular puckers and cellophane maculopathy
- The balanced, single use design provides optimal feel and control
- All single use instruments can be made available in Customised Per Procedure Trays as well as components to Custom Procedure Packs



Why I choose Stellaris® PC:

"I have recently setup my vitreoretinal service and started to use the single use Bausch + Lomb VR forceps. The 23 gauge endgripping forceps are excellent to use. They make ILM peeling so easy!"

George Morphis, MD,  
Vitreoretinal consultant, Hereford



# Stellaris® PC: More Intuitive Enhanced interface for improved ease-of-use



Integrated laser controls



Improved clarity for surgeons

- Enhanced control with upgraded Stellaris PC operating system
- Integrated laser controls
- Status, settings displayed on home screen
- Drop-down menus for each phase
- Colour coded drop down menus for light filter settings
- Voice confirmation on added phases
- Password protected surgeons settings
- Single database and easy-switch settings between Stellaris and Stellaris PC

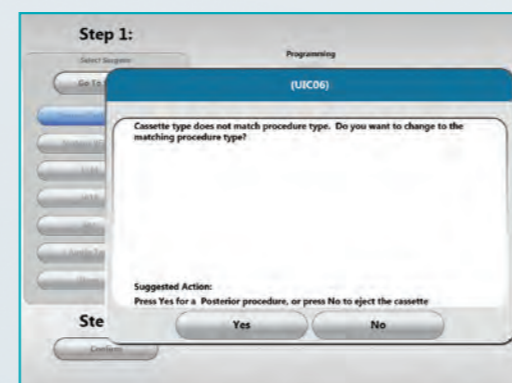
Drop-down, colour coded menu for light filter settings



Even more intuitive for OR staff

- Easy learning curve
- Simplified layout with larger buttons and improved readability
- One button tuning and priming
- One combined screen for all procedural needs
- Intuitive with 'show me the steps' tutorial animation
- Improved contrast, colour scheme and icon size
- 'One Step' error resolution

One Step error resolution



Why I choose Stellaris® PC:  
“The changes to the footpedal are a significant improvement, I only need one footpedal during my surgery, for the power and direct control of the laser”

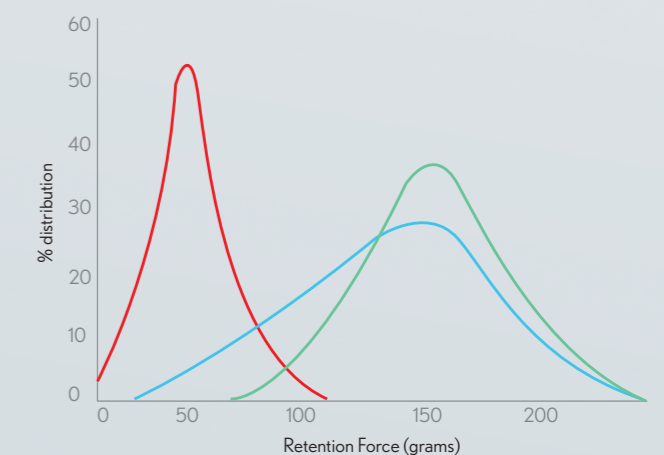
Dr Simonetta Morselli  
Chief of Ophthalmic Department  
Bassiano Hospital, Italy  
[Watch my full interview at  
choosestellaris.com/morselli](http://www.choosestellaris.com/morselli)



## New ESA valved cannula system delivers improved performance and enhanced surgeon control

Bausch + Lomb's new high performance Entry Site Alignment (ESA) valved cannula system provides a secure and stable environment for improved IOP maintenance and enhanced procedural versatility.

Histogram of new 23G cannula Retention Force.  
Current 23G cannula, Alcon 23G VS B+L 23G cannula Retention Force



	Mean	Std Dev	N
NEW 23G can Retention Force (grams)	157.4	27.20	30
Current 23G can Retention Force (grams)	140.8	36.00	30
Alcon 23G can Retention Force (grams)	47.92	18.96	30

# Stellaris<sup>®</sup> PC: Next Generation

## 700+ Stellaris PC's installed in Europe

### Try the Stellaris PC for yourself at our European Centres of Excellence



---

Why I choose Stellaris<sup>®</sup> PC:  
“We asked for a footpedal with integrated laser controls, we have it. Dual linear operation, we have it. We wanted illumination in the anterior segment in cases of corneal opacity, it's done. You have listened and Stellaris has evolved”.

Dr Dov Weinberger  
Head of Ophthalmology  
Rabin Medical Centre  
[Watch my full interview at](#)  
[choosstellaris.com/weinberger](http://choosstellaris.com/weinberger)

For more information visit  
[www.choosstellaris.com](http://www.choosstellaris.com)

For more information on instruments visit  
[www.storzeye.eu](http://www.storzeye.eu)  
or email [storz-instruments@bausch.com](mailto:storz-instruments@bausch.com)

